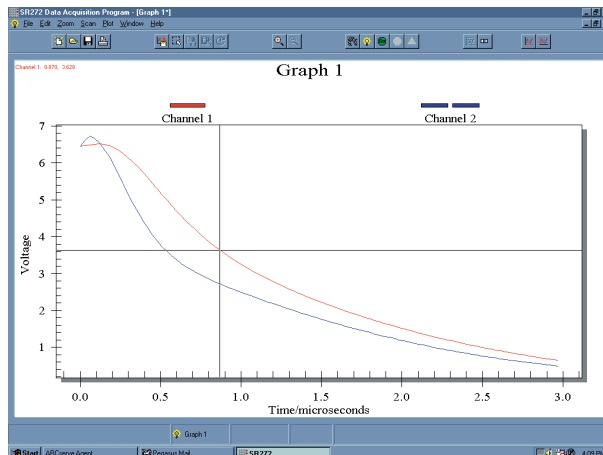


Gated Integrators and Boxcar Averagers

SR272 — Data acquisition software

- **Data acquisition software for SRS Boxcar System**
- **Automatic scan logging**
- **Gate delay scans**
- **Sample rates up to 1100 samples/s**
- **Single or multiple shots per bin**
- **Send commands to other instruments**
- **RS-232 and GPIB communication**



Requirements

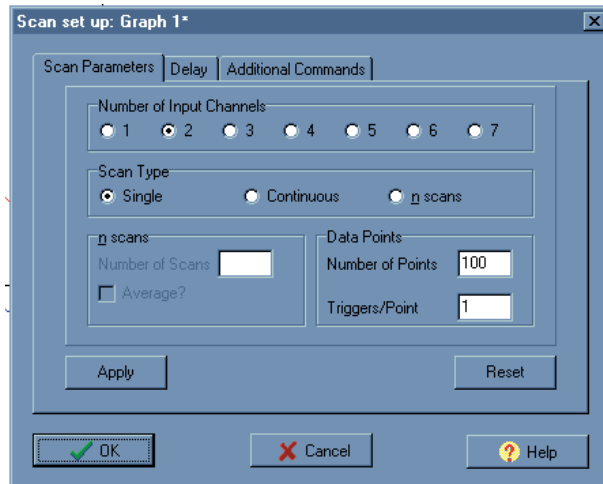
Windows 95/98/ME/NT/2000/XP
GPIB or RS-232 interface
SRS Boxcar system

A demo version of the SR272 is available on-line at www.thinkSRS.com

SR272 Windows Software

The SR272 Boxcar System software provides simplified data acquisition for the SR250 Gated Integrator and the SR255 Fast Sampler. With the SR245 Computer Interface module, it provides a complete pulsed data acquisition system. Up to seven channels can be scanned simultaneously with fixed or scanning gate delays. Scans may be internally or externally triggered. Flexible averaging modes include scan averaging or multiple triggers per point averaging.

Features include multiple graphs, zoom and auto-scale, intuitive editing, cut and paste options, and full Windows help. Data can be stored in various formats including bitmaps, text files, CGM, or MATLAB files for complete flexibility in off-line analysis.



Ordering Information

SR272 Data acquisition software